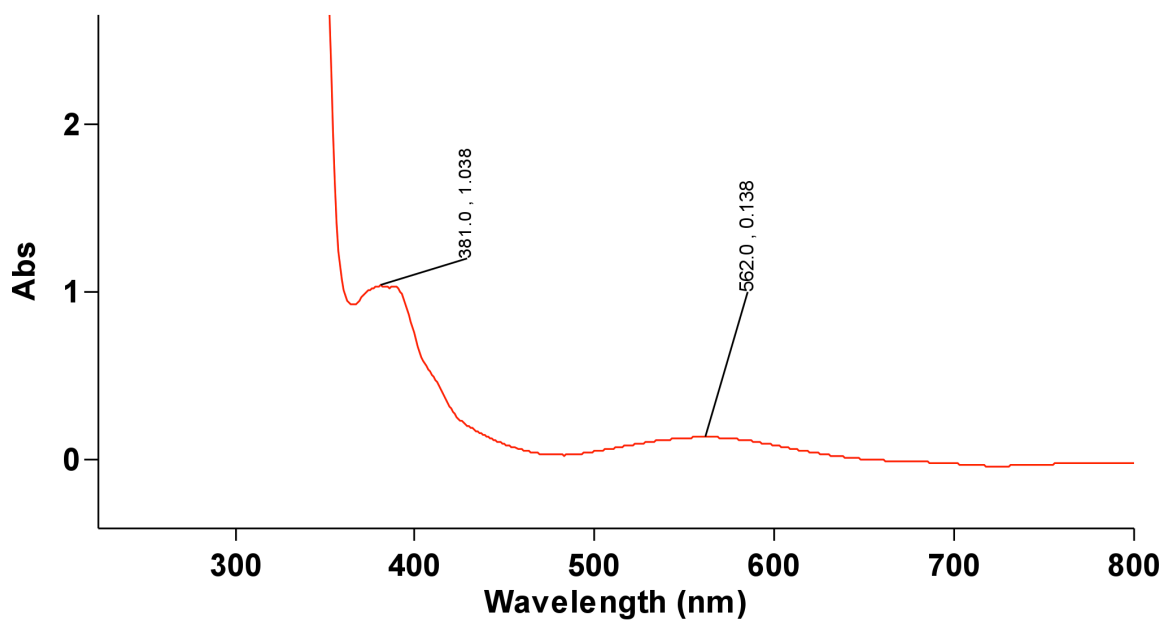


1/5/2021 3:12:45 PM

Page 1 of 4

**Zer
o
Rep
ort**

Read Abs (800.0 nm)
Zero 0.0752

Scan Analysis Report

Report Time : Tue 05 Jan 12:04:58 PM 2021
Method
Batch: D:\chem 110\Mnacac3_arj.DSW
Software version: 5.1.0.1016
Operator:

Instrument Parameters

Instrument	Cary 60
Instrument Version	2.00
Start (nm)	800.0
Stop (nm)	200.0
X Mode	Nanometers
Y Mode	Abs
UV-Vis Scan Rate (nm/min)	600.00
UV-Vis Data Interval (nm)	1.00
UV-Vis Ave. Time (sec)	0.1000
Beam Mode	Dual Beam
Baseline Correction	Off
Cycle Mode	Off
Comments	

Zero Report

Read Abs (800.0 nm)
Zero 0.0752

Sample Name: sample1

1/5/2021 3:12:45 PM

Page 2 of 4

Collection Time

1/5/2021 12:04:59 PM

Peak Table

Peak Style	Peaks
Peak Threshold	0.0100
Range	800.0nm to 200.0nm
Wavelength (nm)	Abs
353.0	3.787
349.0	4.346
346.0	4.818
343.0	3.926
339.0	4.202
335.0	4.280
333.0	4.830
328.0	10.000
324.0	4.358
321.0	4.075
315.0	4.709
310.0	10.000
306.0	10.000
302.0	4.821
298.0	5.146
295.0	5.125
291.0	4.961
289.0	5.313
286.0	4.519
284.0	4.371
280.0	4.843
277.0	5.027
274.0	5.270
271.0	10.000
266.0	10.000
263.0	10.000
261.0	10.000
256.0	4.492
253.0	5.321
250.0	10.000
246.0	10.000
242.0	4.682
239.0	10.000
237.0	4.717
234.0	10.000
232.0	10.000
229.0	4.964
226.0	4.400
224.0	4.495
222.0	4.362
218.0	4.343
214.0	4.070
211.0	4.262
209.0	4.025
205.0	3.960
202.0	4.221

Zero Report

Read	Abs (800.0 nm)
Zero	0.0766

1/5/2021 3:12:45 PM

Page 3 of 4

Scan Analysis Report

Report Time : Tue 05 Jan 03:09:09 PM 2021
Method
Batch: D:\chem 110\Cracac3.DSW
Software version: 5.1.0.1016
Operator:

Instrument Parameters

Instrument Cary 60
Instrument Version 2.00
Start (nm) 800.0
Stop (nm) 200.0
X Mode Nanometers
Y Mode Abs
UV-Vis Scan Rate (nm/min) 600.00
UV-Vis Data Interval (nm) 1.00
UV-Vis Ave. Time (sec) 0.1000
Beam Mode Dual Beam
Baseline Correction Off
Cycle Mode Off
Comments

Zero Report

Read Abs (800.0 nm)
Zero 0.0766

Sample Name: sample2

Collection Time 1/5/2021 3:09:12 PM

Peak Table

Peak Style	Peaks
Peak Threshold	0.0100
Range	800.0nm to 200.0nm
Wavelength (nm)	Abs
562.0	0.138
381.0	1.038
350.0	4.240
345.0	10.000
341.0	10.000
336.0	4.405
333.0	5.018
331.0	10.000
327.0	4.561
324.0	4.080
321.0	10.000
318.0	10.000
316.0	10.000
313.0	10.000
291.0	10.000
286.0	10.000
284.0	10.000
281.0	10.000
277.0	10.000
274.0	10.000
270.0	10.000

1/5/2021 3:12:45 PM

Page 4 of 4

256.0	10.000
239.0	10.000
237.0	10.000
232.0	10.000
227.0	10.000
225.0	10.000
222.0	10.000
216.0	3.959
214.0	3.991
212.0	4.121
209.0	4.025
205.0	4.447
202.0	4.328